

# PATENT GALAXY

Antoine Wasserfallen, PhD



## IPC int'l patent classif.

Scheme 001. Classification Categories

- A SECTION A — HUMAN NECESSITIES
- B SECTION B — PERFORMING OPERATIONS; TRANSPORTING
- C SECTION C — CHEMISTRY; METALLURGY
- D SECTION D — TEXTILES; PAPER
- E SECTION E — FIXED CONSTRUCTIONS
- F SECTION F — MECHANICAL ENGINEERING; LIGHTING; HEATING; WEAPONS; BLASTING
- G SECTION G — PHYSICS
- H SECTION H — ELECTRICITY

**Access to IPC at section level in PDF format**

Online view: [A](#) [B](#) [C](#) [D](#) [E](#) [F](#) [G](#) [H](#) [I](#) [J](#) [K](#) [L](#) [M](#) [N](#) [O](#) [P](#) [Q](#) [R](#) [S](#) [T](#) [U](#) [V](#) [W](#) [X](#) [Y](#) [Z](#)

Download Section files: [A](#) [B](#) [C](#) [D](#) [E](#) [F](#) [G](#) [H](#) [I](#) [J](#) [K](#) [L](#) [M](#) [N](#) [O](#) [P](#) [Q](#) [R](#) [S](#) [T](#) [U](#) [V](#) [W](#) [X](#) [Y](#) [Z](#)

Download Class files: [A](#) [B](#) [C](#) [D](#) [E](#) [F](#) [G](#) [H](#) [I](#) [J](#) [K](#) [L](#) [M](#) [N](#) [O](#) [P](#) [Q](#) [R](#) [S](#) [T](#) [U](#) [V](#) [W](#) [X](#) [Y](#) [Z](#)

**Access to IPC at subclass level in MS Word (.doc) format**

Important note: To open a particular .doc file, unzip the entire .zip file to extract it as necessary.

Download .zip files: [A](#) [B](#) [C](#) [D](#) [E](#) [F](#) [G](#) [H](#) [I](#) [J](#) [K](#) [L](#) [M](#) [N](#) [O](#) [P](#) [Q](#) [R](#) [S](#) [T](#) [U](#) [V](#) [W](#) [X](#) [Y](#) [Z](#)

**IPC Scheme static files (.zip) at Subclass level**

These files were generated by the IPCCLASS software package for the Internet.

Advanced level of file: [A](#) [B](#) [C](#) [D](#) [E](#) [F](#) [G](#) [H](#) [I](#) [J](#) [K](#) [L](#) [M](#) [N](#) [O](#) [P](#) [Q](#) [R](#) [S](#) [T](#) [U](#) [V](#) [W](#) [X](#) [Y](#) [Z](#)

Online view: [A](#) [B](#) [C](#) [D](#) [E](#) [F](#) [G](#) [H](#) [I](#) [J](#) [K](#) [L](#) [M](#) [N](#) [O](#) [P](#) [Q](#) [R](#) [S](#) [T](#) [U](#) [V](#) [W](#) [X](#) [Y](#) [Z](#)

**0208 1000** Water main or service pipe systems (pipes or tub  
**0208 1002** Public or the main pipe systems  
**0208 1004** Domestic or the local pipe systems (domestic plant  
**0208 1007** Arrangement of devices, e.g. filters, flow controls  
**0208 1100** Arrangement of draining devices (draining devi  
**0208 1102** Component parts or accessories (tools for cleaning  
**0208 1104** Devices for cleaning of pipes by heating  
**0208 1106** Devices preventing bursting of pipes by heating  
**0208 1108** Devices for thawing frozen pipes  
**0208 1110** Methods or installations for draining off water (in  
**0208 1112** Hydrants; Arrangement of valves thereon; Keys for  
**0208 1114** Columns hydrants  
**0208 1116** Covers  
**0208 1118** Underground hydrants  
**0208 1120** Protective plates or covers  
**0208 1122** Stand pipes  
**0208 1124** Draining devices for hydrants  
**0208 1126** Devices for releasing foreign matter, e.g. sand  
**0208 1128** Choking tools for hydrants  
**0208 1130** Plier foundations or the apparatus for displacing t  
**0208 1132** Arrangements or adaptations of tanks for water s  
**0208 1134** Containers employing dual engineering techniques f  
**0208 1136** For domestic or the local water supply  
**0208 1138** Without air regulator  
**0208 1140** With air regulator  
**0208 1142** Air regulators  
**0208 1144** For public or the main water supply  
**0208 1146** Of high-level tanks  
**0208 1148** Of underground tanks  
**0208 1150** Adaptations of devices for putting pumping plant

**PROJECT DESCRIPTORS**  
**SOME SCREENSHOTS FROM WWW.WIPO.INT**

THEME **WIPO** AREA **IPC**

Espacenet Patent search

Deutsch English Français Contact

Change country

About Espacenet Other EPO online services

Search Result list My patents list (2) Query history Settings Help

EP0675235 (B1)

**Bibliographic data: EP0675235 (B1) — 1997-07-02**

★ In my patents list → EP Register → Report data error Print

**Drain funnel**

Page bookmark: EP0675235 (B1) — Drain funnel

Inventor(s): VOLLNER RUDOLF DIPL-ING FH [DE] JURENKA EMIL [DE] ;

Applicant(s): HONEYWELL AG [DE] ;

Classification: International: B01D23498; B01D23499; B01D706 (IPC1-7) E03C108  
 Eurn: B01D23498 B01D23499 E03C108

Application number: EP1995104471 19950327

Priority number(s): DE19940003489 19940330

Also published as: DE69575235 (A1) DE6960398 (A1) AT194862 (T)

**Abstract of EP0675235 (A1)**

Translate this text into: [ ]

[ German ] [ Japanese ] [ French ] [ English ] [ Spanish ] [ Italian ] [ Portuguese ] [ Russian ] [ Chinese ] [ Korean ] [ Hindi ] [ Arabic ] [ Hebrew ] [ Greek ] [ Turkish ] [ Vietnamese ] [ Thai ] [ Indonesian ] [ Malay ] [ Tagalog ] [ Filipino ] [ Bengali ] [ Urdu ] [ Persian ] [ Pashto ] [ Sinhala ] [ Tamil ] [ Telugu ] [ Kannada ] [ Malayalam ] [ Marathi ] [ Gujarati ] [ Odia ] [ Assamese ] [ Nepali ] [ Sinhala ] [ Tamil ] [ Telugu ] [ Kannada ] [ Malayalam ] [ Marathi ] [ Gujarati ] [ Odia ] [ Assamese ] [ Nepali ]

The spout (10) has a casing (12), which contains members (14,32) by which the pressure and concentration of the discharge jet can be reduced. The casing has a flange (22) for connection to the drain, and can enclose at least one sleeve (24,32) for pressure reduction. A plate (26) can be arranged opposite the flange, and can be bent up towards it, in order to disrupt and distribute an incoming drainage stream. It can be fitted with holes (28) so as to act as a sieve, and the diameter of the holes can also increase towards the outside of the plate.



PROJECT **SURVEY**  
**CLUSTERS STATE OF THE ART**

DATE 2012 CLIENT ?

For half of the Clusters Measures for Shaping the Patent Portfolio were suggested<sup>1)</sup>



PROJECT **IMAGINE**  
**CLUSTERS**

DATE DATE CLIENT NOM

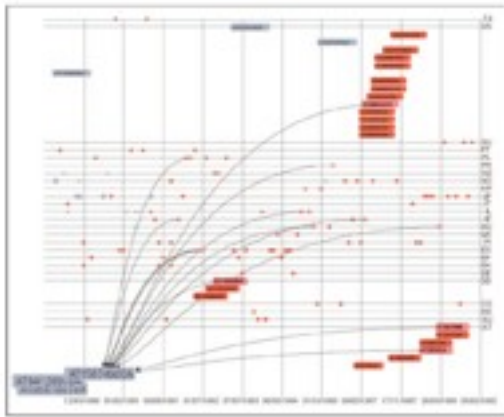


Figure 3. Visualization of classificatory information (right-hand section)



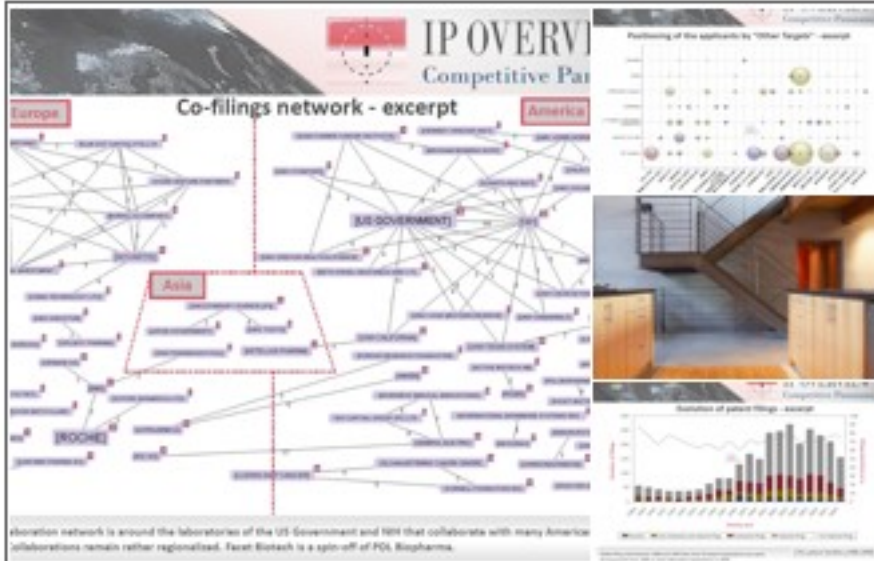
Figure 4. Patent information integrated in a web page as Semantic Links

Figure 2. Patent family layout based on filing date (x-axis) and country (y-axis)

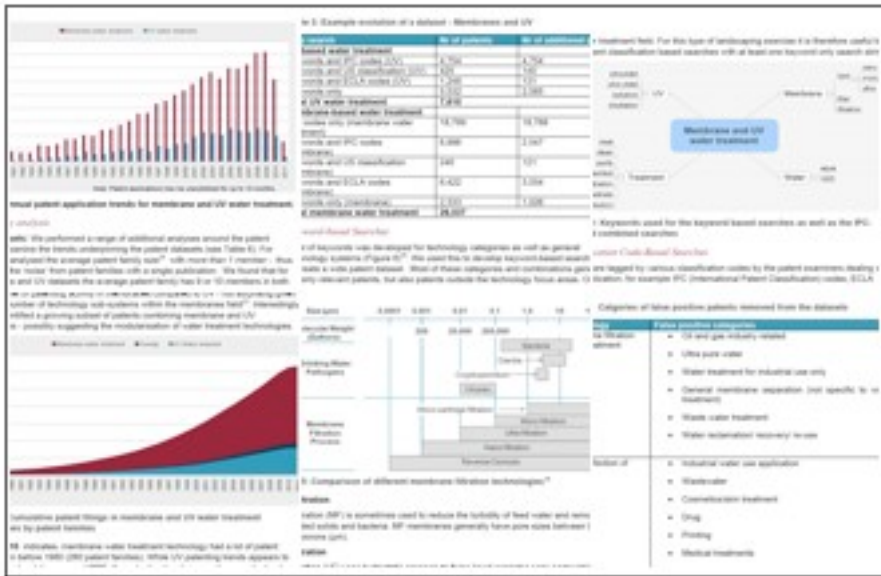
Since the IPC is hierarchically organized, for visually identifying clusters we apply a hierarchical clustering algorithm that classifies the data into clusters based on the similarity of the data points.

## MAP

CONTROL - WEB BASED VISUAL EXPLORATION OF PATENT INFORMATION



## CONTROL MAP



**WIPO SURVEYS WATER TREATMENT N0947 CLUSTERS ?**

imagine

**Evaluate the application and select the project concepts**  
 Listings are elaborated with the support of national associations of regions and municipalities. We introduce an IT layer as automated help for possible massive data collection (there could be 300 to 1000 candidates per Country...). The (distance & e-learning type) selection process will be organized as an exam (in fact using a distance learning program). For that purpose our research group can use a commonly used platform (generic open source distance learning software) or a proprietary system (enclosed in our proposal is a letter from a European developer who agrees to support our project, see [www.knowledgechallenge.com](http://www.knowledgechallenge.com)). This part is lead by the e-learning experts including the Hungarian team and the Swiss team for the final presental meetings (end phase is presental).

clusters

- Survey, electronics. "Exam" in distance learning way. The selection board is lead by the Swiss partners.
- Overall visibility of centers for social innovation. The publication of results is as wide as possible (press release, web pages issuing it).
- Social innovation is identified it attractive, i.e. d. is the incubator "Full or empty" ?
- Indicator of success: criteria will be proposed to use as success indicators.
- Network of incubators: the aim of our proposal is to create a network of social incubators sharing and exchanging
- Information. National associations of regions and cities will relay information and help our group.

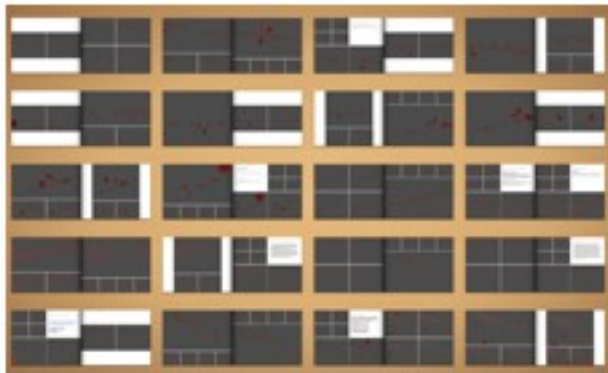


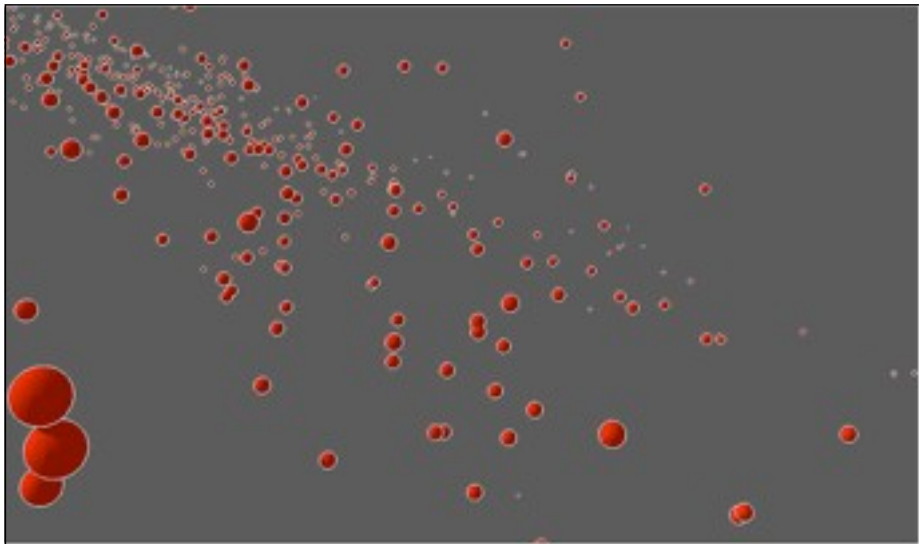
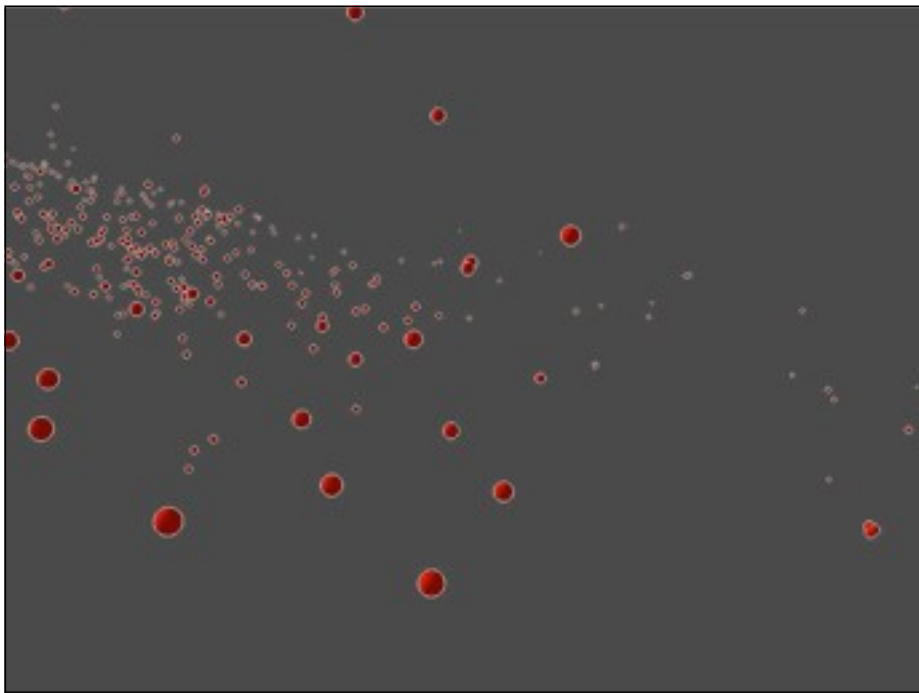
# imagine

◆ clusters

# imagine

◆ clusters





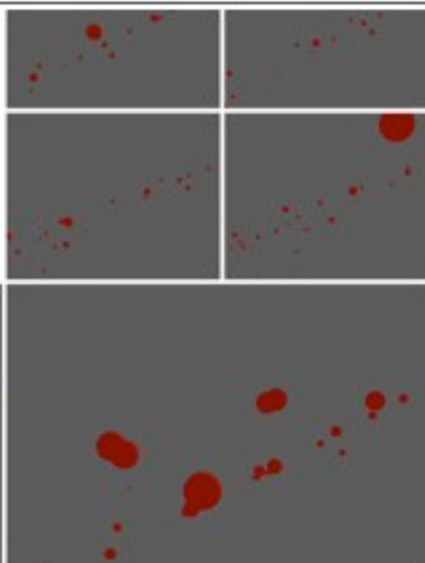
# CARTOGRAPHIE DES BREVETS

nomenclature mondiale en 3D

INTERNATIONAL PATENT CLASSIFICATION  
CLASSIFICATION INTERNATIONALE DES BREVETS

EXEMPLE EAU

EAU ET SON OBSTENTION C01B 5/00  
NAVRES (production d'eau douce sur les navires)  
B63J 1/00



**IMAGINE**  
CLUSTERS

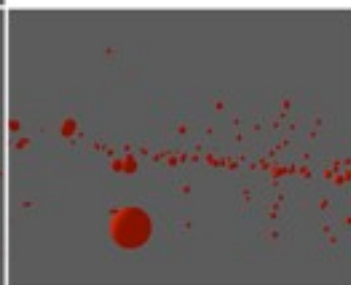
The International Patent Classification (IPC) is a structured taxonomy "classic" that can be used actively for automated searches. We propose to reorganize it although we do not require an official reorganization. The **IPC reorganization** of such a status, in our opinion, would make more sense to inventors and the networks supported by the European Union in order to provide a competitive advantage to our continent. This advance propels a strategic and technologically proactive dynamic, enabling the creation and support of new businesses.

We imagine a new mapping of the galaxy of human knowledge, in terms of circles or clusters. The basic idea is to discover where are the unexplored areas between domains which are better known. We will recruit inventors and inventors from all social groups (craftsmanship, centers and SMEs, or to citizens) to do their research applied precisely in these areas where there is a development potential. In fact, our proposal is to make the opposite of conventional research. We will develop the unexplored areas by indicating the areas to be explored.



#### Système automatisé

Après la génération du premier modèle avec ses contours, par la suite les positions peuvent être automatisées, et constituer leurs volumes par elles-mêmes.

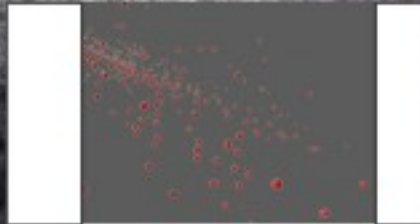


**REWRITE A MORE ACCESSIBLE MANUAL**  
CLUSTERS



# imagine

clusters



Une vision radicalement innovatrice

La vision innovatrice de l'avenir de la gestion des entreprises apporte une nouvelle vision de comment organiser l'entreprise de demain. Cette vision est basée sur la notion de "clusters" et est le résultat de la recherche scientifique effectuée au Centre de Recherche de l'INRS.

